

# MFD 10

Remote control for rectifiers  
newly defined



- The MFD 10 process controller provides ideal utilization facilities for almost every type of rectifier and electrochemical process. Additionally to the digital displays for voltage and current the MFD 10 offers an LCD display that supports the user with all important process data.
- In addition to the basic functions current and voltage control, ampere-hour meter, timer and set-point ramp, there are three optional versions which offer various functions.

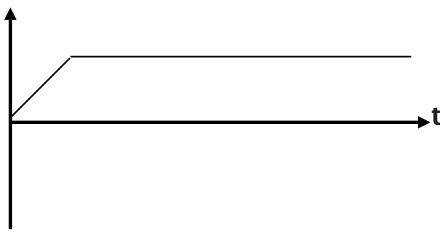
# MFD 10

Robust, compact, many functions  
and easy to operate

## MFD - Versions:

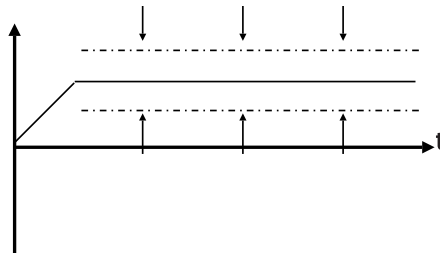
### Version 1.0 (Basic Functions):

- 1 Ramp
- 2 Ampere-hour meters
- 2 Timers



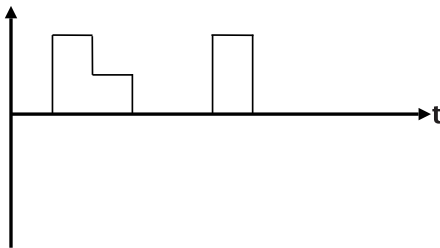
### Version 2.0:

- + V-Pilot  
(Process monitoring of current or voltage)



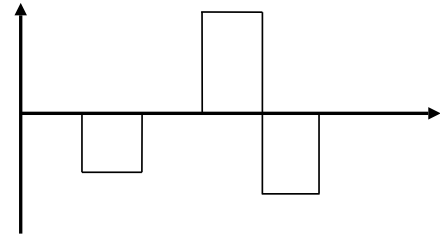
### Version 3.0:

- + Pulse (unipolar)



### Version 4.0:

- + Polarity reversal (Anodic/Cathodic)
- + Pulse (bipolar)



## Special Features:

- Easy to operate
- Large digital instruments for indicating the process current and voltage
- Wear-free electronic setpoint device for programming process current and process voltage
- Start / Stop function after setpoint preselection
- Optical indicator light (LED) for current or voltage control
- Robust, corrosion-resistant polystyrene (PS) enclosure for industrial applications
- Splash-proof design (NEMA 12)
- Connection to almost every type of rectifier containing an analog interface (0 - 10 V DC)

(Subject to modifications)



### American Plating Power, LLC

11000-26 Metro Parkway

Fort Myers, FL 33966

Florida

Phone +1 239 275 5877

Fax +1 239 275 4959

[www.americanplatingpower.com](http://www.americanplatingpower.com)

[sales@americanplatingpower.com](mailto:sales@americanplatingpower.com)

Partner in Europe:

### Munk GmbH

Gewerbepark 8 + 10

59069 Hamm

Germany

Phone +49 2385 740

Fax +49 2385 7455

[www.rectifier.com](http://www.rectifier.com)

[sales@rectifier.com](mailto:sales@rectifier.com)